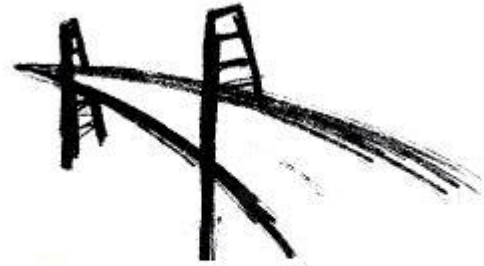




شركة المستقبل لتكنولوجيا النظم (فيوتك - سيستمز)

The Future for Systems Technology Co. (FuTech - Systems)

MAXDOC-BRIDGE



MAXDOC-BRIDGE

maximo™

ProjectWise®

Bentley®
Channel Partner

IBM®
Business Partner

2011



Maximo 5x,6x,7x, ProjectWise Integration (MAXDOC-BRIDGE)

Ensuring your Maximo system is populated with high-quality data may be one of the most important considerations for any Maximo software implementation or upgrade. Part of Maximo Data is the site Documentation which includes (Asset Manuals, Asset Drawings, and Material Safety Data Sheets MSDS, Location or site maps ...).

In today's connected economy, intelligent and timely information is crucial to an organization for effective collaboration, planning and relationship management. Suppliers, partners, customers, employees and others require up-to-date information to analyze, plan, schedule or to simply do their day-to-day job. Management requires information from various sources to be accessible within the same end-user application.

MAXIMO, as a leading Strategic Asset Management system, has been elevating asset management from a tactical to a strategic level by focusing on Return on Assets. As organizations continue to streamline operating efficiencies, they are looking at Return on Assets as one of the critical component as it relates to the net effect on the bottom line. By extending MAXIMO's visibility into the enterprise, MAXIMO further optimizes the asset management process by having access to information from various business systems within the enterprise and intelligently planning and scheduling maintenance operations accordingly.

Likewise, these business systems are able to receive critical asset information from MAXIMO for planning, scheduling and reporting functions.

ProjectWise as a leading Engineering Document management system, play the main role in managing the project document which includes, Engineering drawings, Equipment manuals, P&ID ,

Maximo / ProjectWise Connector (DOC-BRIDGE) incorporates the very latest state of the art technology using JAVA scripts in order to support and to provide robust, scalable and secured infrastructure Enterprise Integration.

Equipment ID , Operating Location ID , Plans (Safety , Job Plan) ID and Maximo Reports are seamless send it to ProjectWise database, Document Description and its Path in ProjectWise secured storage folder will be send from ProjectWise to Maximo Attached Document.

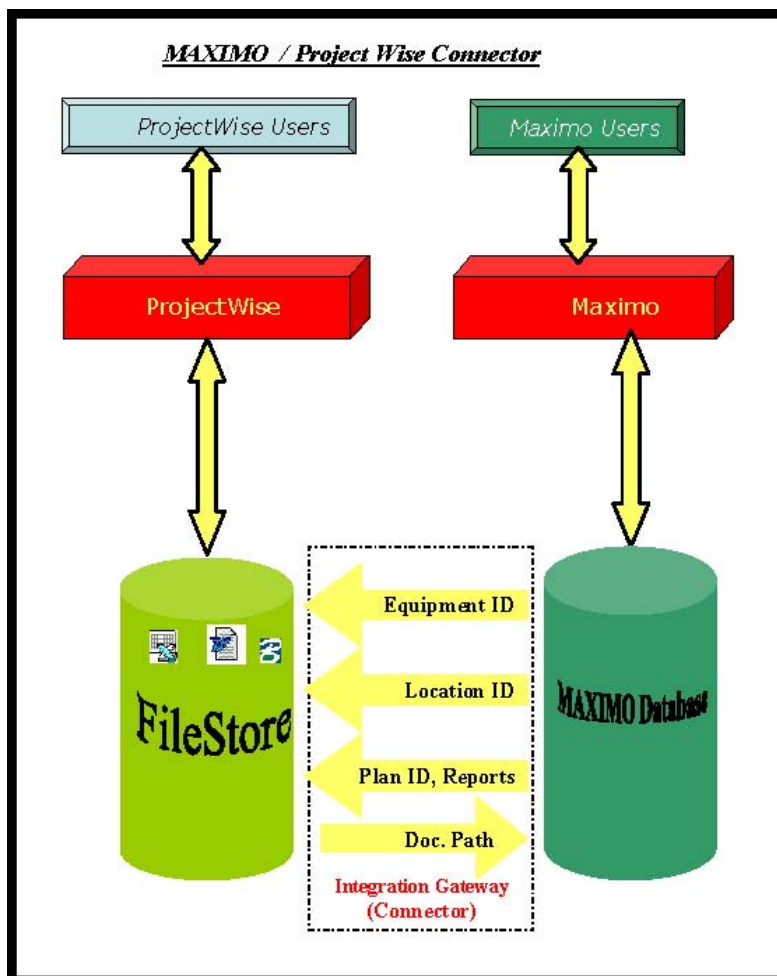


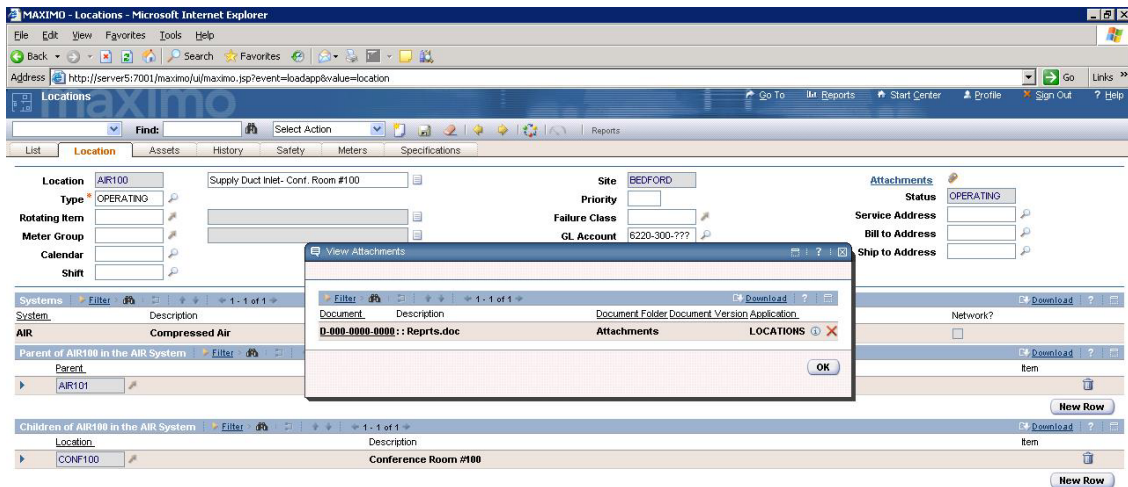
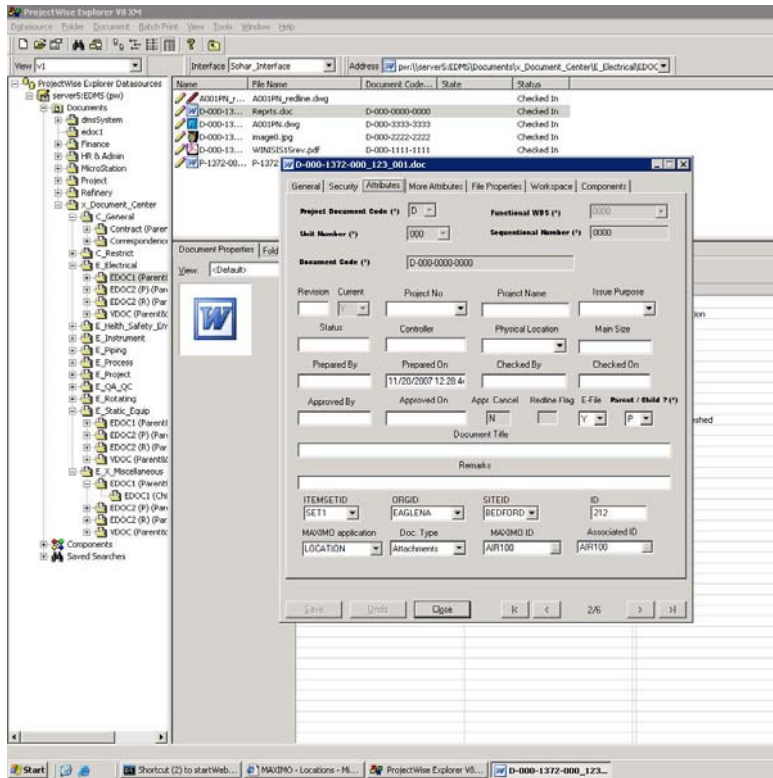
Maximo Users will have the accessibility privileges to the linked document through Maximo Application, no need to switch to ProjectWise Application, Also no needs to exhaust your ProjectWise User license for Operation and Maintenance staff.

DOC-BRIDGE will be able to improve efficiencies, increase accuracy and eliminate errors.

Using Maximo / ProjectWise Connector will help in merging and help in building a centralized Document Management System inside the Enterprise, using the same Enterprise Document Workflow.

Maximo – ProjectWise Integration Mechanism.





Additional Professional Service Products:

- [Maximo Data Verification , Uploading /Updating Tools \(MAXLOADER\)](#)
- [Maximo Inventory Auditing Application & Reports.](#)
- [Maximo Inventory Physical Count Loader.](#)
- [Maximo GSM, SMS Notification Gateway.](#)



About **FuTech** - Systems

FuTech - Systems is a privately held of end—to end comprehensive software solutions for the infrastructure lifecycle. We believe in the vital role that infrastructure must play both in sustaining society and in sustaining the environment. **FuTech - Systems** Provides proven applications & Services that help engineers, architects, contractors, governments, institutions, utilities and owner-operators design, build, operate & maintain more productively, collaborate more globally and deliver infrastructure assets that perform more sustainably

54 Al Saydah Khadejah St. Al Sefarat
Area, Al Akad Tower # 1, Fifth floor

Nasr City, Cairo – Egypt

Tel.: +20 (2) 22749132

+20 (2) 22749168

Fax: +20 (2) 22734418

Contact Details:-

email :- eelabd@futech-eg.com

www.futech-eg.com